



CORTEX FABRICS

YOUR SUSTAINABLE SOURCING PARTNER

INDEX

ABOUT US	2
MESSAGE FROM CEO	3
OUR IMPACT AGENDA	5-7
GREEN WASHING	8-9
DESIGN LAB	10-11
MERCHANDISING	12-14
QUALITY	15-16

FABRICS	17-18
MEN'S FABRIC TYPES	19-38
WOMEN'S FABRIC TYPES	40-57

FAQ	58-59
BRAND PROTECTION	60-61
SATISFACTION GUARANTEED	62
RESOURCES	63-65
OUR CUSTOMERS	66
CONTACTS	68

25 YEARS OF EXCELLENCE

Cortex has been supplying amazing garments, fabrics, and trim collections worldwide for over 25 years. Our love for fashion, textiles, and design is the driving element behind our success. We believe in the individuality of each person and work hard to ensure comfort and confidence.

Customer retention demonstrates a company's ethos & we have built long-term connections with major brands for over two decades.

This accomplishment is attributed to our devoted teams of designers, fabric & trim curators, merchandisers, quality controllers and logistics professionals.

Cortex is the market leader in innovation and always pushes the boundaries. We exceed expectations with our unrelenting commitment to quality and attention to detail - allowing companies and individuals to realize their creative potential !



MESSAGE FROM THE CEO

**"Mindfulness,
awareness to nature
& people are the
only way forward..."**

DHEERAJ LUTHRA
FOUNDER & CEO

**THERE
IS NO
PLANET - B**



OUR IMPACT AGENDA

AN ABRIDGED VERSION



OUR IMPACT AGENDA

HUMANITY

At Cortex, We believe in the philosophy "Love the people & Love the planet". All our endeavors are driven by this simple yet profound statement.

With a steadfast commitment to making a positive impact, we embrace the fundamental principles of compassion, empathy, and inclusivity.

Our efforts are not solely centered around fashion and textiles; they extend far beyond, seeking to uplift and empower individuals from all walks of life. Through sustainable practices, ethical sourcing, and community engagement, we strive to foster a world where humanity thrives.

OUR IMPACT AGENDA

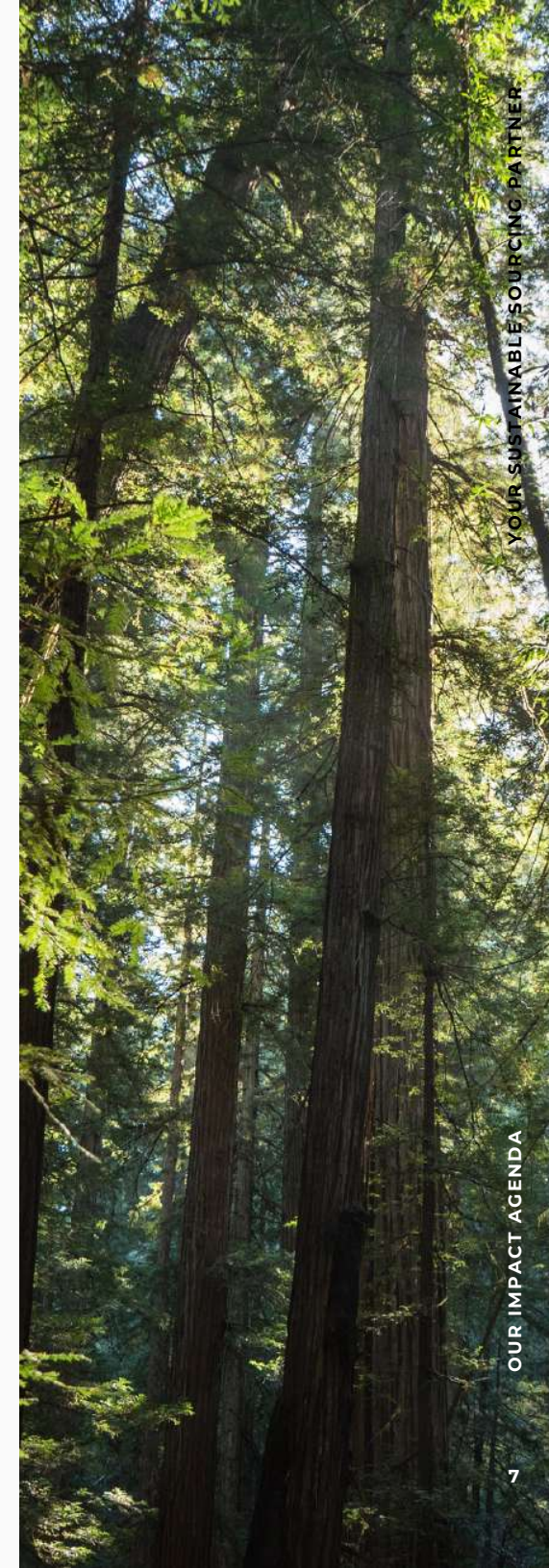
SUSTAINABILITY

Sustainability is at the heart of our ethos. We are dedicated to making a positive impact on the environment through a range of initiatives.

From harnessing solar power, implementing wastewater recycling, rainwater harvesting, and eliminating single-use plastics to growing organic vegetables, planting trees, using sustainable fabrics, and promoting biodegradable ECO-BAGS to reduce our ecological footprint.

We actively promote sustainability awareness by organizing a dedicated Sustainability Day for our teams.

Together, we strive to create a more sustainable world, where conscious choices lead to a brighter tomorrow.



An aerial photograph of agricultural fields. The left side shows lush green fields with visible tire tracks, while the right side shows brown, tilled soil. A single tree with bright green leaves stands in the middle ground, partially overlapping the text.

GREEN WASHING



GREEN WASHING

At Cortex, we believe in transparency and honesty about the way we conduct our lives, businesses and sustainability efforts.

We want our customers to feel confident that we are genuinely committed to making a positive impact on the environment. That's why we go beyond mere claims and actively implement concrete actions to reduce our ecological footprint.

We take tangible steps towards sustainability by researching & promoting materials that meet environmental standards. We openly share our initiatives, goals & achievements by inviting our customers to join us on this journey toward a more sustainable future.

We walk the talk!



DESIGN LAB

STIR YOUR SENSES...

DESIGN LAB

ARTFUL CREATIONS

At Cortex, your success is our mission. With the convenience of smooth collaboration through emails and the added ease of Zoom calls, our multilingual crew makes it easy to work together seamlessly, bringing your vision to life with curated collections fabrics and accessories each season. They incorporate latest fashion trends and innovative fabric types to enhance and elevate brands. We deliver all these offerings to your doorstep, reducing your carbon footprint.

Our super-fluent team of designers excels in software that creates CAD for plaids, stripes & intricate prints based on your ideas and inspirations and will help create mood boards, brand direction, digital look books, line sheets, 3-D renders, tech packs, and digital patterns.

They ensure that your inspirations become a reality within your timelines, and are with you every step of the way.



MERCHANDISING



MERCHANDISING

YOUR PERSONALIZED JOURNEY

Welcome to our merchandising department, a one-stop shop for fabric sourcing. We offer an extensive collection of high-quality fabrics with vibrant colors, exquisite patterns, and textures that cater to your preferences.

When you choose Cortex as your fabric supplier, you will have the support of a dedicated professional as your sole point of contact. They ensure that the product is manufactured according to approved specifications and meets the quality standards and delivery timelines. We prioritize transparency by openly communicating about production materials.

An expert merchandiser can provide technical advice and assistance when required. They diligently monitor and report on order progress, coordinate with QA and logistic department, and ensure quality and smooth transportation until the supplied trims are happily utilized.

At Cortex your satisfaction is our top priority.

MERCHANDISING

BEYOND SOURCING

We recognize the crucial role of fabric pricing in determining a brand's success, which is why our merchandisers specialize in providing competitive pricing, ensuring that fabric expenses are carefully managed.

They collaborate closely with you to identify fabrics that not only align with your budget but also offer optimal value for your investment.

Our objective is to assist you in procuring the ideal product, balancing affordability, quality, and safety, enabling you to concentrate on marketing, and expanding your brand.





QUALITY

YOUR SUSTAINABLE SOURCING PARTNER

QUALITY

SAFETY INTEGRITY RELIABILITY

We truly believe that our products should not only meet performance expectations but exceed them.

Our team of dedicated, qualified, and experienced quality controllers and lab technicians, ensure that all fabric undergoes inspection before shipment.

We conduct comprehensive tests, including color fastness to washing, crocking, tear strength, tensile strength, dimensional stability, bowing, skewing, lot continuity, pilling resistance, pH levels, elongation testing, water solubility tests, odor testing, sealing strength, after-wash appearance testing, size & thickness tolerance, and hand-feel.

Highest quality is always at top of our priorities





FABRICS

WEAVING THE TAPESTRY
OF POSSIBILITIES

ETHICAL • CIRCULAR • TRACEABLE • SUSTAINABLE

Global Organic Textile Standard (GOTS)

Organic 100 Content Standard (OCS)

Organic Blended Content Standard (OCS)

Recycled 100 Claim Standard (RCS)

Recycled Blended Claim Standard (RCS)

Global Recycled Standard (GRS)

Regenerative Organic Certified (ROC)

Recover™(GRS)

Good Earth Cotton®(independently certified)

Recycled 100 Claim Standard (RCS)

Recycled Blended Claim Standard (RCS)

If Conventional- Dew Retted preferred

Recycled Claim Standard (RCS)

Global Recycled Standard (GRS)

ZQ™

NATIVA™

Responsible Alpaca Standard (RAS)

Good Cashmere Standard (GCS)

Responsible Down Standard (RDS)

Redown®

Sustainable Fibre Alliance (SFA)

Leather Working Group (LWG)

Global Recycled Standard (GRS)

PrimaLoft®Pure, Prima loft® Bio and recycled

Bluesign®

Repreve®(GRS Certified)

Renu Project (GRS Certified)

Econyl®(GRS Certified)

Sorona®

Lycra®Ecomade

Roica™

Tencel™ Lyocell

Tencel™ Modal

Tencel™ Refibra

Lenzing™ Ecovero™ (FSC, PEFC and Ecolabel)

Program for the Endorsement of Forest Certification (PEFC)

Forest Stewardship Council (FSC)

Naia™ (FSC)

EU Ecolabel

The Hot Button Report (Green Shirt)

Global Organic Textile Standard (GOTS)

Organic 100 Content Standard (OCS)

Regenerative Organic Certified (ROC)

European Flax®



MEN'S FABRICS

YOUR SUSTAINABLE SOURCING PARTNER

MEN'S FABRICS



MEN'S FABRICS

VERSATILE FABRICS AT YOUR DOORSTEP

Enter a world of men's clothing fabrics that fit different elements of your wardrobe and can be worn for every season and situation. We offer a carefully developed selection designed to satisfy a brand's lifestyle needs.

From casual shirting to formal occasions, active wear to beach wear, and everything in between, our fabrics effortlessly combine style and comfort. With a focus on quality and versatility, our range encompasses sophisticated outerwear, comfortable loungewear, and everything else you need to elevate your fashion game.

We cater to all seasons, including spring, summer, fall, winter, holiday, and resort, and pride ourselves in creating tailor-made collections for each season. Discover the perfect blend of functionality and style as you explore our exceptional range brought to you on time and on trend.

CASUAL SHIRTING SUMMER

"COOL AND STYLISH
FABRICS FOR SUNNY
DAYS"





CASUAL SHIRTING

WINTER

"COZY AND
FASHIONABLE COLD-
WEATHER ESSENTIALS"

CASUAL SHIRTING

INDIGO

"TIMELESS CHARM WITH
A CONTEMPORARY
TWIST"





FORMAL SHIRTING

SUMMER

"SOPHISTICATED FABRICS
FOR WARM-WEATHER"

FORMAL SHIRTING

WINTER

"ELEGANT, COZY, AND
STYLISH ESSENTIALS FOR
COLD WEATHER"





FORMAL SHIRTING

INDIGO

"TIMELESS CHARM MEETS
MODERN FLAIR"

ACTIVWEAR

GOLFING

"ENHANCE YOUR SWING WITH
PERFORMANCE-DRIVEN FABRICS
THAT OFFER FLEXIBILITY,
BREATHABILITY AND STYLE"





ACTIVEWEAR

YOGA

"FLOW SEAMLESSLY THROUGH
YOUR PRACTICE WITH
STRETCHABLE, MOISTURE-
WICKING FABRICS THAT PROVIDE
COMFORT AND FREEDOM OF
MOVEMENT"

ACTIVEWEAR

RUNNING

"KEEP UP THE PACE WITH
LIGHTWEIGHT, MOISTURE-
WICKING FABRICS
ENGINEERED TO MAXIMIZE
YOUR PERFORMANCE AND
PROVIDE OPTIMAL
COMFORT"





BEACHWEAR

BOARD & SWIM SHORTS

"DIVE INTO STYLE AND
COMFORT WITH QUICK-
DRYING, DURABLE FABRICS
DESIGNED FOR YOUR BEACH
& POOL ADVENTURES"

BOTTOMWEAR

FORMAL

"EXUDE TIMELESS ELEGANCE WITH PREMIUM FABRICS TAILORED FOR FORMAL OCCASIONS."





BOTTOMWEAR

CASUAL

"EMBRACE THE CHARM OF
OF INDIGO DENIM, OPEN
WEAVE TWILLS HOPSACK
AND CANVAS"

BOTTOMWEAR

GOLFING

"ELEVATE YOUR GAME WITH
HIGH-PERFORMANCE
FABRICS THAT COMBINE
STYLE AND FUNCTIONALITY"





LOUNGEWEAR

SWEATS & HOODIES

"STAY COZY IN STYLE WITH SOFT
AND COMFORTABLE FABRICS,
PERFECT FOR RELAXING MOMENTS"

LOUNGEWEAR

INDIGO

"EMBRACE THE BLUES"





OUTERWEAR

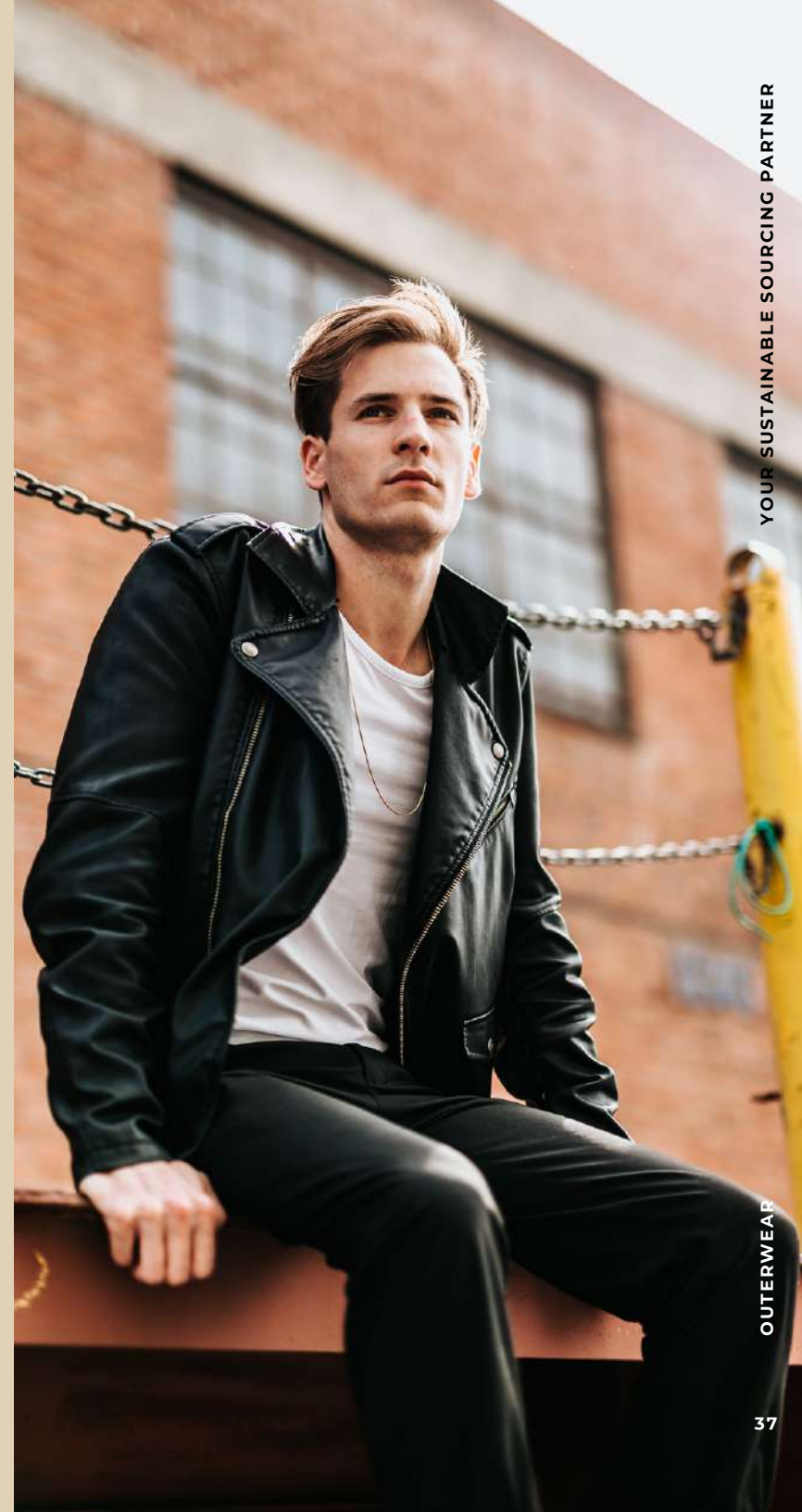
SOFT SHELL JACKETS

"LIGHTWEIGHT,
VERSATILITY, COMFORTABLE
FABRICS DESIGNED TO
ELEVATE YOUR OUTDOOR
STYLE"

OUTERWEAR

WEATHER PROOF JACKETS

"CONQUER THE ELEMENTS
IN STYLE WITH DURABLE
AND WEATHER-RESISTANT
FABRICS THAT PERFORM"





OUTERWEAR

FLEECE SHERPA

"COZY, SOFT, AND LUXURIOUS
PLUSH, CORAL AND SHERPA
KEEPS YOU WARM."



**TRANSFORMING
INSPIRATIONS
INTO REALITY**

A woman with long dark hair, wearing pink sunglasses and a long, flowing, floral-patterned dress, stands next to a bright red convertible car. She is looking upwards and to the right. The background is filled with lush green foliage and palm trees under bright sunlight. The car's front wheel and side mirror are visible in the lower left and right respectively.

WOMEN'S FABRICS

WOMEN'S FABRICS

CELEBRATE YOUR UNIQUE STYLE

Welcome to the world of women's fabrics, where fashion meets versatility. Explore a captivating collection of textiles that effortlessly transitions from casual to formal, active to beach wear, performance to loungewear, and even outerwear.

Our carefully curated collections showcase fabrics that seamlessly blend style, comfort and functionality. Whether one desires chic elegance, dynamic performance, or relaxed comfort, our diverse selection offers perfect fabrics for every occasion and season.

Our fabrics are beyond threads; they are timeless works of art that Inspire!





CASUAL SHIRTING SUMMER

"EFFORTLESSLY CHIC
FABRICS FOR SUN-
SOAKED DAYS"

CASUAL SHIRTING

WINTER

"LUXURIOUSLY COZY
ESSENTIALS FOR CHILLY
WEATHER"





CASUAL SHIRTING

INDIGO

"EMBRACE THE
TIMELESS ALLURE OF
INDIGO FABRICS"

FORMAL SHIRTING

SUMMER

"EFFORTLESSLY REFINED
FABRICS FOR WARM-
WEATHER SOPHISTICATION"





FORMAL SHIRTING

WINTER

"COZY AND STYLISH
ESSENTIALS FOR COLD-
WEATHER ELEGANCE"

ACTIVWEAR

GOLFING

"SWING IN STYLE WITH
PERFORMANCE-DRIVEN
FABRICS"





ACTIVEWEAR

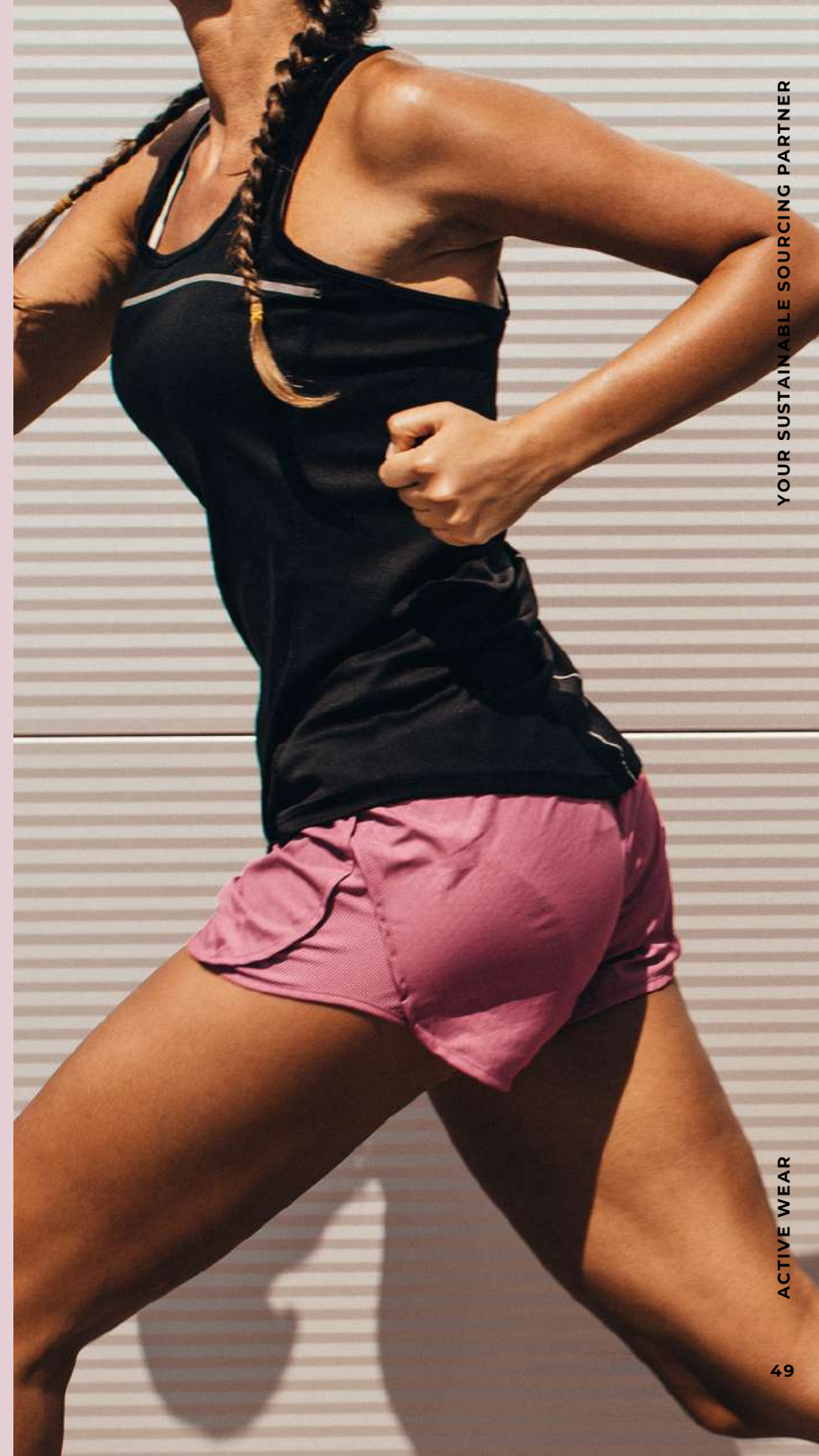
YOGA

"FLOW FREELY WITH
FLEXIBLE AND MOISTURE-
WICKING MATERIALS"

ACTIVEWEAR

RUNNING

"RUN COMFORTABLY WITH
LIGHTWEIGHT AND MOISTURE-
WICKING FABRICS"





BOTTOMWEAR

GOLFING

"SWING IN STYLE WITH HIGH-PERFORMANCE FABRICS"

BOTTOMWEAR

FORMAL

"EMBRACE ELEGANCE WITH
REFINED AND
SOPHISTICATED FABRICS"





BOTTOMWEAR

INDIGO

"EXPRESS YOUR
INDIVIDUALITY WITH
TIMELESS INDIGO-
INFUSED FABRICS "

LOUNGEWEAR

SWEATS & HOODIES

"LOFTY FLEECE, BRUSHED RIBS
FOR THE COZY AND CUDDLE UP
TIME WITH YOUR LOVED ONES"





LOUNGEWEAR

T-SHIRT

"BUTTERY SOFT COMFORTABLE
FABRICS FOR LAZY SUNDAYS"

OUTERWEAR

SOFT SHELL JACKETS

"LIGHT WEIGHT FLEXIBLE
SOFT FABRICS FOR COMFORT
AND FUNCTIONALITY"





OUTERWEAR

WEATHER

PROOF JACKETS

"WEATHER RESISTANT
FABRICS DESIGNED TO KEEP
YOU PROTECTED WITHOUT
COMPROMISING ON STYLE"

OUTERWEAR

FLEECE SHERPA

"COZY, SOFT AND LUXURIOUS
PLUSH, CORAL AND SHERPA
KEEPS YOU WARM."



FAQ

DEVELOPMENT LEAD TIME

CRITERIA	YARN DYED CAD	PRINTED	SOLID DYED
CAD DEVELOPMENT	3-5 DAYS	5-8 DAYS	NA
H/L; STRIKE-OFF; LAB DIPS	10-12 DAYS	10-12 DAYS	10-15 DAYS
SAMPLING YARDAGE	25-35 DAYS	25-35 DAYS	25-35 DAYS
BULK FABRIC	40-60 DAYS	40-60 DAYS	40-60 DAYS
MOQ FOR SAMPLE YARDAGE	50 YDS/CLR	50 YDS/CLR	50 YDS/CLR
MOQ FOR GARMENT PRODUCTION	1200 UNITS/STYLE 600 UNITS/COLOR	1200 UNITS/STYLE 600 UNITS/COLOR	1200 UNITS/STYLE 600 UNITS/COLOR
DEV. CHARGES FOR SAMPLE YARDS	FABRIC COST + \$300	FABRIC COST + \$500	FABRIC COST + \$250
MOQ FOR BULK YARDAGE	2000 YDS/FABRIC/ COLOR	2000 YDS/FABRIC/ COLOR	2000 YDS/FABRIC/ COLOR



BRAND PROTECTION

BRAND PROTECTION

OUR COMMITMENT

At Cortex, brand protection goes beyond being just a policy; it is a fundamental value that is deeply embedded in every action. We recognize the significance of a brand's distinctiveness and exclusivity. Whether you select products from our catalog or collaborate with us to develop new ones, rest assured that your designs and creations remain confidential and strongly safeguarded. Our dedication to loyalty is unwavering and ensures that the brand maintains its unique identity and competitive advantage.

With Cortex, you enter in a lasting partnership built on trust, loyalty, and shared achievements.





SATISFACTION GAURANTEED

YOUR SATISFACTION MATTERS TO US

At Cortex, we prioritize the satisfaction of our valued customers. We understand that occasional grievances may arise, and we are dedicated to promptly and effectively resolving them. With well-defined policies in place, we address quality concerns, service issues, and other areas of importance to ensure that your experience with us is nothing short of exceptional.

Your satisfaction is our mission!



RESOURCES

Driven by our philosophy of "Love the people & Love the planet," we are passionate about sharing valuable information with our customers and society at large.

Join us on this journey towards a more sustainable future, as we strive to educate, engage, and empower our customers and communities to understand more and make mindful choices that positively impact both people and the planet.

RESOURCES

Connect with us through our YouTube channel and LinkedIn page, where we regularly update and share videos that focus on Humanity & Sustainability and provide insights, ideas, and inspiration.

VIDEOS

- [Our impact Agenda](#)
- [Sustainability](#)
- [Inspiring the youth](#)
- [Journey of a shirt](#)
- [Team at Cortex](#)
- [Hunt for the secret superstar](#)
- [Inspire 4 the secret super stars](#)
- [A tribute to our supply chain partners](#)

YOUTUBE

<https://www.youtube.com/@cortextextiles3604/videos>





RESOURCES

DOCUMENTS

- [Our impact Agenda](#)
- [A Kids Guide to the Galaxy](#)
- [Journey of Fashion for Kids](#)

LINKEDIN

<https://www.linkedin.com/company/28454075/admin/>

OUR CUSTOMERS

Splash
IN LOVE WITH FASHION


The Edinburgh Woollen Mill®

GLASSONS

for all mankind®

COSTCO
WHOLESALE

DKNY

LINKSOUL

RAINFORREST


Canada Sportswear

m|travis Mathew

PISTOLA

THURSDAY
— BOOT CO. —

JOE FRESH


FAHERTY

TUFTE

Flag & Anthem

philhobar.

Rails

bella dahl

*Splendid**


sundays
by wearesundays®

**YOUR
SUCCESS
IS OUR
MISSION**



An aerial photograph of a dense, lush green forest. A dirt road winds through the trees, curving from the left towards the right. The text is overlaid on the image in a clean, white, sans-serif font.

**WE WELCOME YOUR
THOUGHTS, IDEAS AND
OPINIONS ON OUR
ONGOING WORK**

THANK YOU FOR YOUR TIME !!

WWW.CORTEXTEXTILE.COM